

Why Surround View?



Surround-View (SV) systems provide the driver with a complete 360° view around the vehicle.

The 'split screen' monitor displays:

- A permanent 'look down' view from above, showing the vehicle and its surroundings
- Automatically triggered individual camera views (left camera when indicating left; right camera when indicating right; rear camera when reversing)

Four ultra-wide angle cameras (front, left, right and rear) are connected to an Electronic Control Unit (ECU), which 'stitches' the images together to form a seamless 'look down' view.

The benefits of Surround-View include:

- Elimination of all blind spots
- Clear visibility of vulnerable road users and hazards
- Reduced likelihood of accidents and incidents
- Evidence recording (when specified with an optional DVR - see overleaf for details)

Our Service

- 'At home' installation
- Bespoke calibration
- UK-based support

What Are The Options?



Omni-Van™ 360°

- 12 volt system
- VGA cameras
- 7" dash/mirror-mounted monitor



Omni-Vue™ 360°

- 12/24 volt system
- Analogue HD cameras
- A range of monitors



Omni-Vue™ 360° *Digital HD*

- 12/24 volt system
- Crisp 720p visuals
- 7"/10" digital monitor

Wireless TX/RX available for caravan/trailer use

In-Depth Comparison

Page 2



Omni-Van™ 360°

Developed with smaller motorhomes and caravans in mind.

- 12 Volt
- Keybox is an optional extra
- Utilises four VGA polycarbonate cameras
- 182° viewing angle
- IP68
- Views can be tailored to meet customer's specific requirements
- Choose from a 7 inch dash or mirror-mounted monitor
- Compatible with four-channel and two-channel DVRs
- DVRs available
- 20 frames-per second



Omni-Vue™ 360°

Suitable for all sizes of motorhome or caravan.

- 12/24 Volt
- Keybox included as standard, which enables manual camera selection
- Utilises four metal 1.3MP/WDR cameras
- 184° viewing angle
- IP69K
- Views can be tailored to meet customer's specific requirements
- Choose from a range of 7 inch dash and mirror-mounted monitors
- Compatible with four-channel and two-channel DVRs
- DVRs available
- 30 frames-per second



Omni-Vue™ 360° Digital HD

Next generation **digital** surround view technology. Suitable for the very largest motorhomes and RVs.

- 12/24 Volt
- Keybox included as standard, which enables manual camera selection
- Utilises four metal 720p/WDR cameras
- 190° viewing angle
- IP69K
- Views can be tailored to meet customer's specific requirements
- Comes with a 7 inch digital monitor
- Option to upgrade to a 10 inch monitor
- Two-channel analogue DVR available
- Digital DVR coming very soon
- 30 frames-per second



Monitor Options

Omni-Van™ 360° System Monitor Options

- 7" GP Dash Mounted
- 7" Mirror Mounted

Omni-Vue™ 360° System Monitor Options

- Standard 7" Dash Mounted
- 7" Mirror Mounted
- Superior 7" Dash Mounted

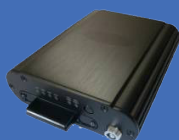
Omni-Vue™ 360° Digital HD System Monitor Options

- 7" Digital HD Dash Mounted
- 10" Digital HD Dash Mounted

Digital Vehicle Recorders

DR-400N 128GB

- Four recording channels
- Up to 1TB storage capacity
- Records at 30fps
- Secured hard drive tray
- GPS and 3-axis g-sensor



DR-120 16GB

- Two recording channels
- Up to 128GB storage capacity
- Records at 30fps
- AV-out connection
- Optional WiFi module



1GB provides approximately 1 hour of high-resolution video storage